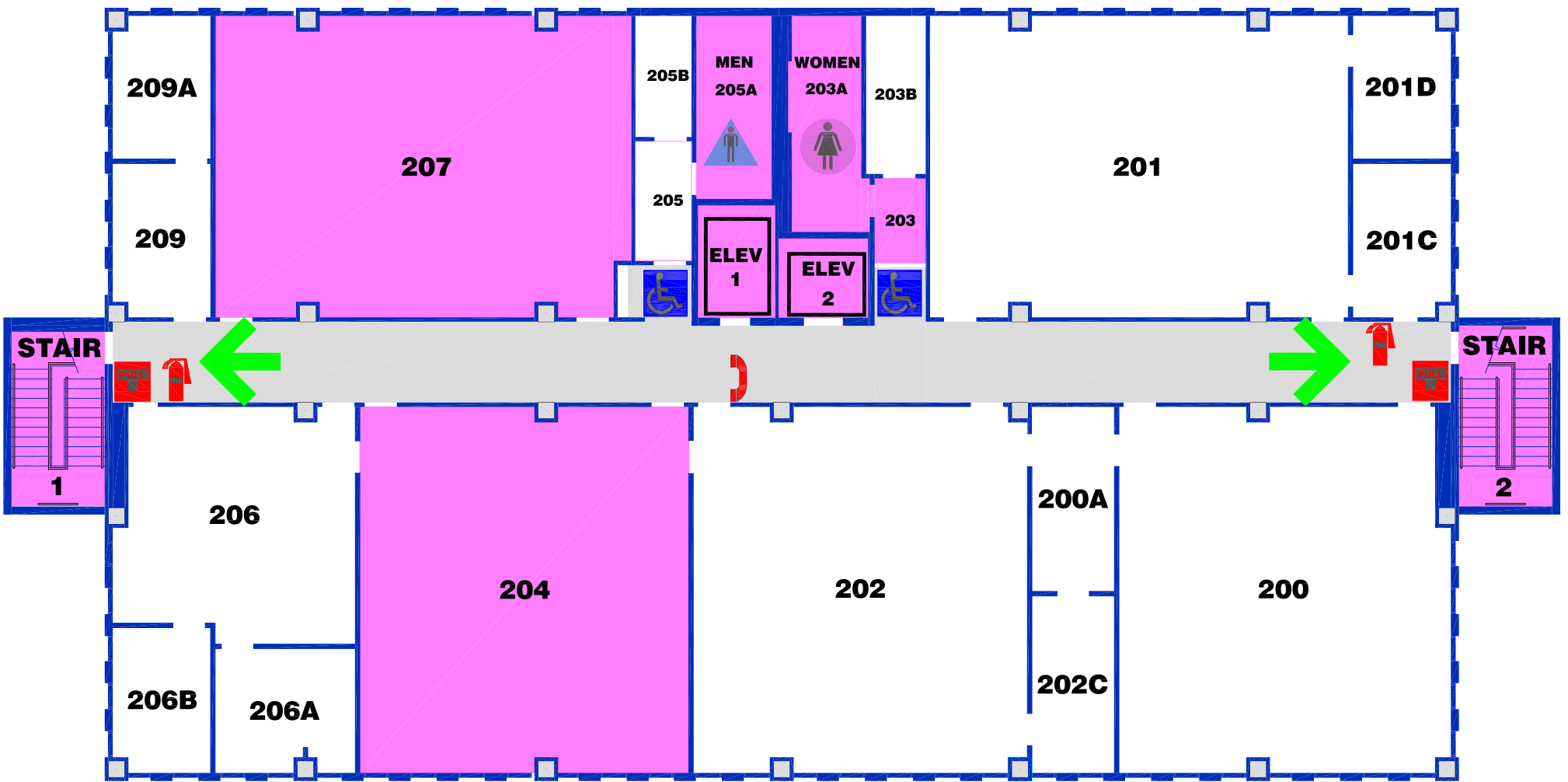




## Occupancy Plan



**EXIT**



**FIRE ALARM PULL STATION**  
(horn sound & strobe lights)



**FIRE EXTINGUISHER**



**CAMPUS PHONE**  
Emergency: Dial 911



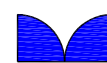
**PUBLIC COMMON AREA**



**WOMEN'S TOILET**



**MEN'S TOILET**



**AUTOMATIC DOOR**



**ACCESSIBLE**



**ELEVATOR**

# USE STAIRS IN CASE OF FIRE