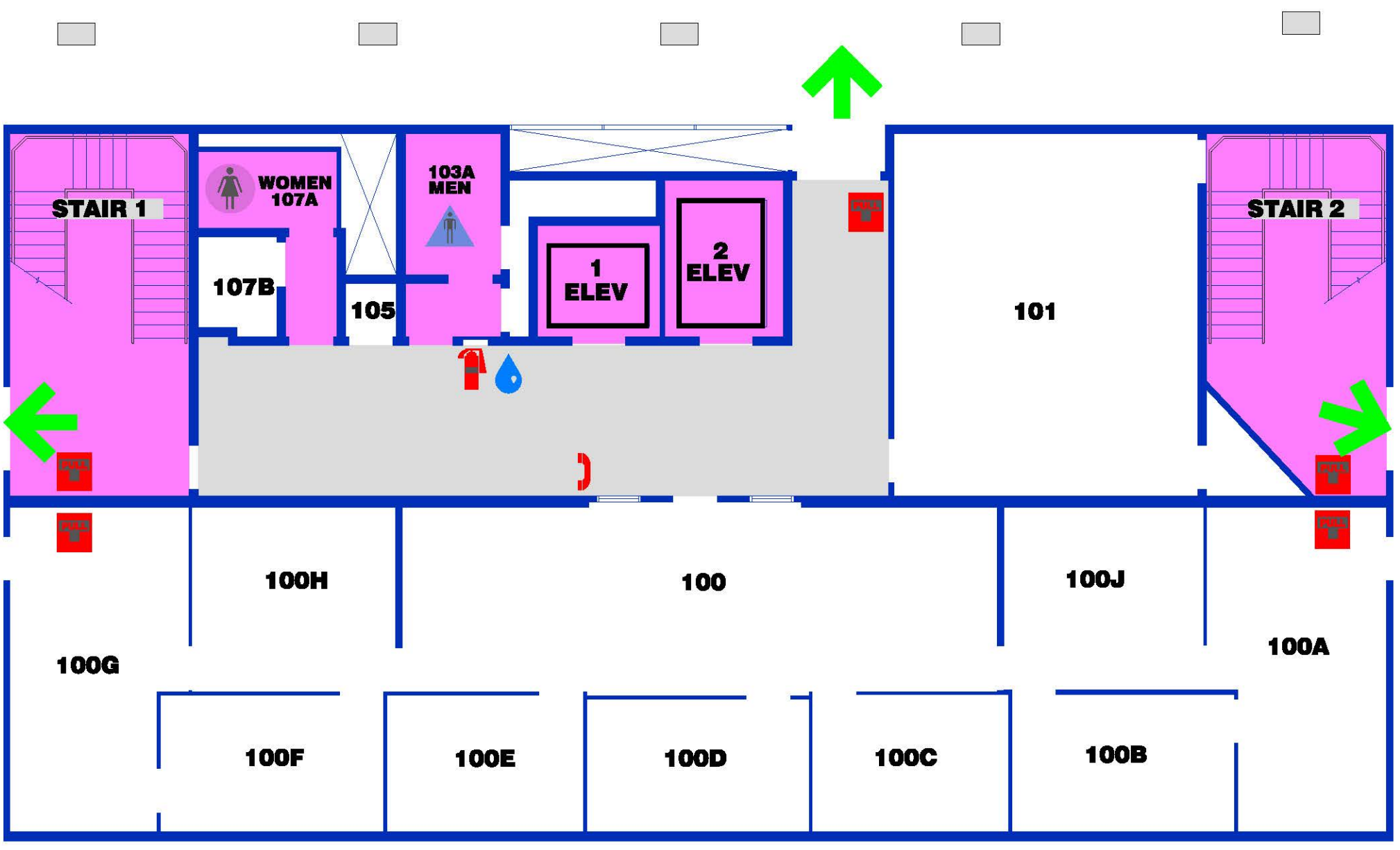


# ENGINEERING TOWER

1<sup>st</sup> Floor



## Occupancy Plan



 PUBLIC COMMON AREA

 WATER BOTTLE FILLUP STATION

 EXIT

 FIRE ALARM PULL STATION  
(horn sound & strobe lights)

 FIRE EXTINGUISHER

 CAMPUS PHONE  
Emergency: Dial 911

 WOMEN'S TOILET

 MEN'S TOILET

 AUTOMATIC DOOR

 ACCESSIBLE

 ELEVATOR

### USE STAIRS IN CASE OF FIRE