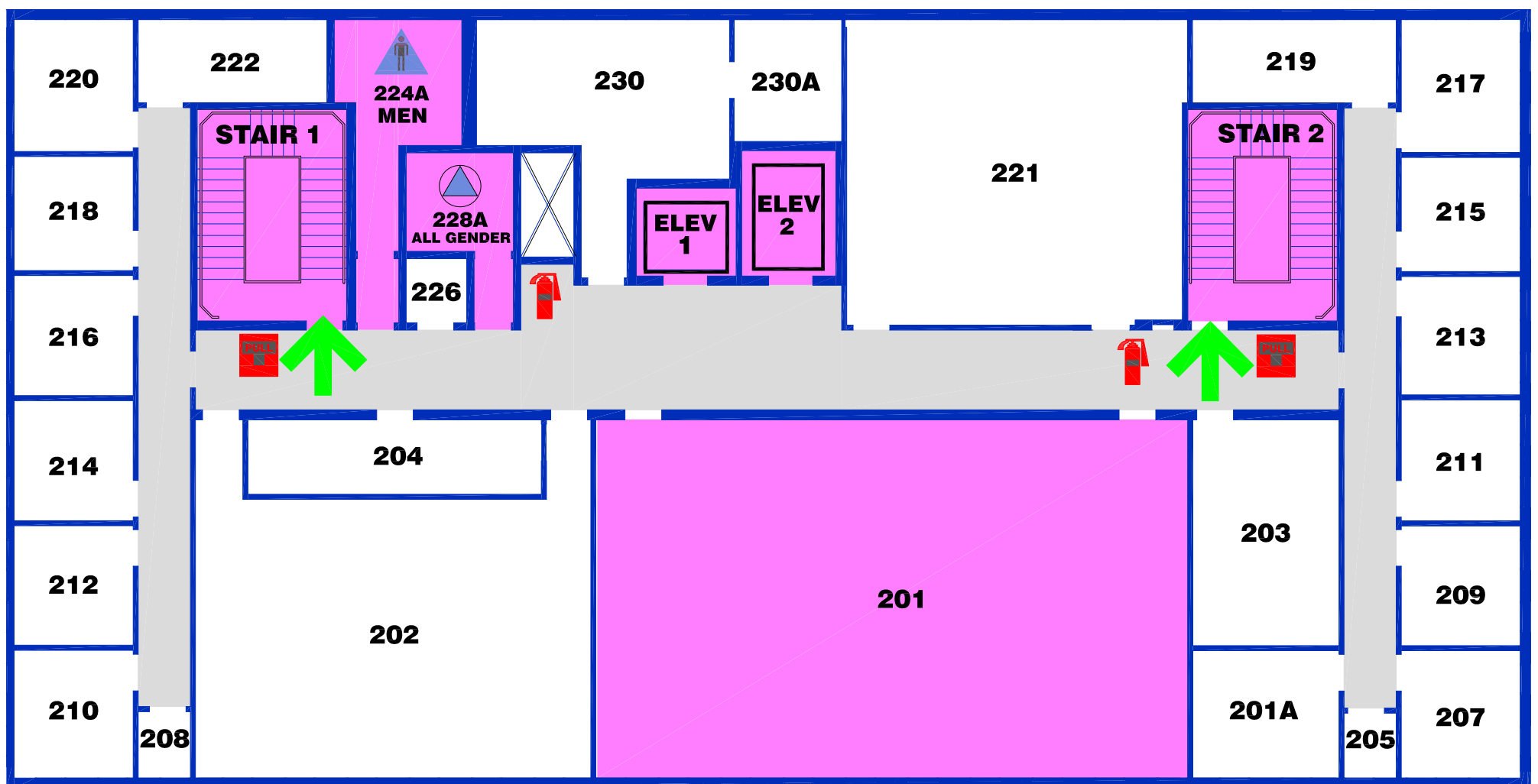


ENGINEERING TOWER 2nd Floor



Occupancy Plan



 PUBLIC COMMON AREA

 EXIT

 FIRE ALARM PULL STATION
(horn sound & strobe lights)

 FIRE EXTINGUISHER

 CAMPUS PHONE
Emergency: Dial 911

 WOMEN'S TOILET

 MEN'S TOILET

 AUTOMATIC DOOR

 ACCESSIBLE

 ELEVATOR

USE STAIRS IN CASE OF FIRE