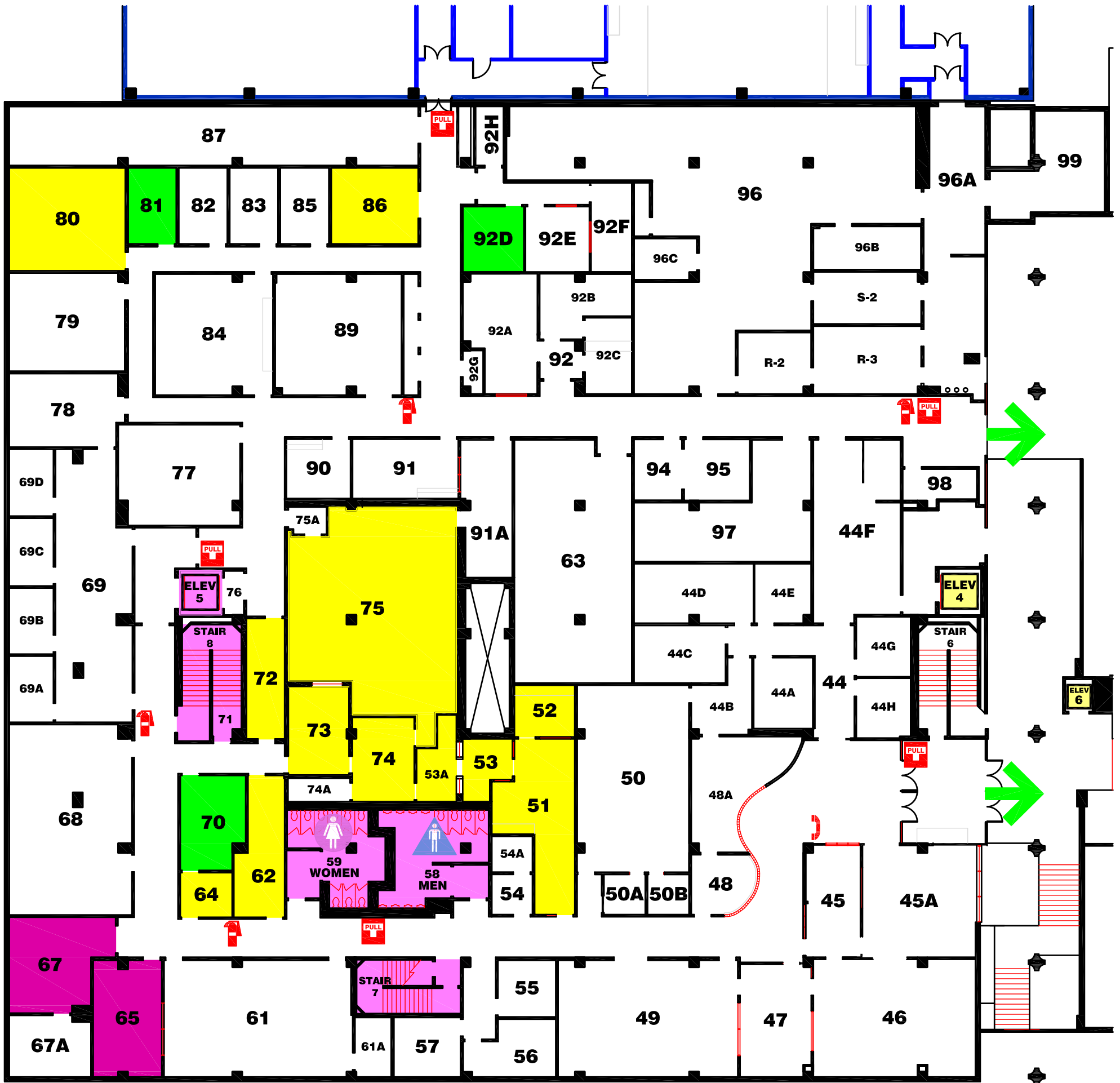


# LIBRARY SOUTH BASEMENT



## Occupancy Plan



 **FIRE ALARM PULL STATION**  
(horn sound & strobe lights)

 **FIRE EXTINGUISHER**

 **CAMPUS PHONE**  
Emergency: Dial 911

 **ACCESSIBLE**

 **ELEVATOR**

 **PUBLIC SPECIAL AREA**

 **STAFF COMMON AREA**

 **STAFF PERSONAL AREA**

 **PUBLIC COMMON AREA**

 **EXIT**

### USE STAIRS IN CASE OF FIRE